

# INSTRUMENTS | EQUIPMENT

## DIAGNOSTIC IMAGING

### HONDA HS-1500

#### Digital B&W Ultrasound Scanner

A truly portable unit the HS-1500 is a compact, lightweight, ultrasonic system designed for practices that involve small animals, large animals or a combination of both.

#### THE HS-1500 CONVEX/LINEAR ULTRASONIC SYSTEM FEATURES:

##### High Resolution

High image quality 8.4' wide LCD.

##### Portable and lightweight

Ultra lightweight at under 6kg

Optional backpack

##### Simple operation

Output connectors are located in the front panel.

Simple key functions.

##### Two power source

AC and battery with optional one, two or three hour battery packs.

Also operates on a 12v Ni-MH battery recharges by itself and can be easily replaced.

##### Useful Option

Handy LCD unit with freeze and stored keys.

##### Cine-loop function

This function immediately plays back ultra-sound images frame by frame. Allowing for the right frame to be selected and saved.

##### Image Storage x 60 Images

Built in flash memory image storage can keep the images in the field.

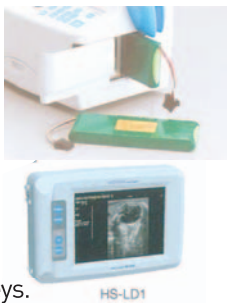
Diagnosis anywhere and make prints back at the clinic.

##### Stored Images (JPEG) Transfer

Image Utility Program enables the clinical images stored in the memory to be transferred to a PC.

##### Various measurement and calculation software

Distance, Circumference, area, Volume, Angle Gestational weeks calculation, Histogram, LV calculation, Tendo percent .



HS-LD1



**HONDA HS1500**  
[ probes not included ]  
Provet code : ULTR 37



#### Mixed practice and probes

HCS-352M : 20R Convex Probe 3.5/5.0/7.0 MHz

Provet code : ULTR 38

HCS-3710M : 10R convex Probe 5.0/7.5/9.0 MHz

Provet code : ULTR 39

HLV-375M : 50mm Rectal Probe 5.0/7.5/10.0 MHz

Provet code : ULTR 41

HLS-375M : 50mm Linear Probe 5.0/7.5/10.0 MHz

Provet code : ULTR 42

HLS-313 : 30mm Linear Probe 10.0 MHz

Provet code : ULTR 43

HCV-3710MV : 10R Convex Probe ( cow ) 5.0/7.5/9.0 MHz

Provet code : ULTR 44

HLV-3212M : 120mm Linear Probe 1.5/2.0/3.0 MHz

Provet code : ULTR 45



#### Options

Trolley - Provet code : ULTR 46

Video Printer - Provet code : ULTR 47

Handy LCD unit : HS-LD1

Provet code : ULTR 48

Foot Switch - Provet code : ULTR 49

Biopsy Guide : HBV-4710MV

Biopsy attachment for HCV-3710MV

Provet code : ULTR 51

#### Stand off

HWA-03 : Stand off ( cassette ) for HLS-375M

Provet code : ULTR 52

HWA-04 : Stand off ( cassette ) for HLS-313

Provet code : ULTR 53

HWB-02 : Water bag for HLS-375M and HLS-313

Provet code : ULTR 54

# INSTRUMENTS | EQUIPMENT

## DIAGNOSTIC IMAGING

### HONDA HS-2000

#### Digital B&W Ultrasound Scanner

The Honda HS-2000 is a compact yet attractive unit featuring outstanding technology that will enable the user to fulfil the present and future requirements for patient diagnosis.

#### THE HS-2000 CONVEX/LINEAR DIAGNOSTIC SCANNER FEATURES:

**Excellent image via advanced technology**

Dynamic focusing

Multi-frequency probes

**Compact high class technology**

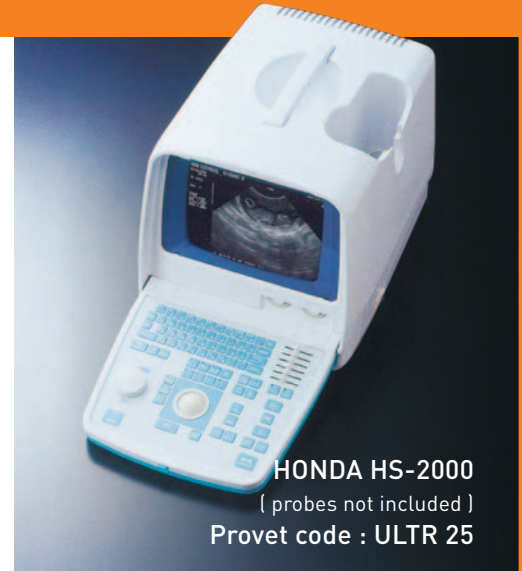
Suitable for hand-carry use in practice and in the field.

Weight approximately 12kg

**Fine operation on a large keyboard**

User can control the functions with one touch keys stroke. Keys, knobs and trackball are positioned for effortless operation.

**Wide range of Multi-frequency probes:**



**HONDA HS-2000**  
(probes not included)  
Provet code : ULTR 25

**9-inch monitor**  
High resolution B/W CRT 256 greyscale in a compact package.

**Two probe connector**  
Two probes can be connected to the unit at one time.




**Various measurement and calculation software**  
Distance, Circumference, area, Volume, Angle  
Gestational weeks calculation Histogram, LV calculation

**Image storage x 60 images**  
Built in flash memory image storage can keep the images in the field.  
Diagnosis anywhere and make prints back at the clinic.  
Digital jpeg image to PC storage and transfer capability.

**Various software**  
Image Utility Program enables the clinical images stored in the memory to be transferred to a PC.

**Cine-loop function**  
This function immediately plays back ultra-sound images frame by frame. Allowing for the right frame to be selected and saved.

 <p><b>HCS-452M</b> Multi Frequency Monocross Probe 3.5 - 5.0 - 7.0 MHz</p> <p>Due to it's wide frequency range it's the ideal probe for small animal examination from large dogs (2.5 MHz) to small cats (7.0 MHz). The small footprint provides easy contact for reproductive, abdominal and cardiac examinations.</p> <p>Provet code : ULTR 27</p>	 <p><b>HLS-475M</b> Multi Frequency Linear Probe 5.0-7.5-10.0 MHz, 30mm</p> <p>Because of it's wide frequency range and it's size the equine practitioner also has larger horses, where extra wide penetration is required, this is the ideal probe for foal examinations. The probe has a handle and is therefore easy to handle.</p> <p>Provet code : ULTR 28</p>	 <p><b>HLS-475WF</b> Multi Frequency Rectal Probe 5.0-7.5-9.0 MHz</p> <p>Because of it's wide frequency range and image with the probe not only gives an excellent image quality when used rectally in large animals, but can also be used for foal examinations. This allows the veterinarian to start with only one probe for both types of examination.</p> <p>Provet code : ULTR 26</p>
 <p><b>HCS-4710M</b> Multi Frequency Monocross Probe 5.0-7.5-9.0 MHz</p> <p>Due to it's wideband and high frequency range this is the ideal probe for performing small animal examinations. The small footprint (10mm width) makes it possible to scan the smallest animals like rats, rabbits, etc. Reproductive, abdominal and cardiac examinations for these smallest of animals.</p> <p>Provet code : ULTR 33</p>	 <p><b>HLS-413</b> High Frequency Linear Probe 10.0 MHz, 20mm</p> <p>The high frequency of this easy to handle 10mm 10.0 MHz linear probe makes it easy for the equine practitioner to obtain the best possible images of horse tendons.</p> <p>Provet code : ULTR 129</p>	 <p><b>HLS-432M</b> Linear Probe 2.5 MHz</p> <p>The fat and muscle mass of the back muscles in sheep distorts the growth and quality of the meat. The low frequency linear probe with a footprint of 10mm is ideal for scanning meat quality. Due to the wide footprint it gives you a good overview of the scanned area.</p> <p>Provet code : ULTR 31</p>
 <p><b>HCV-4710MV</b> Multi Frequency Monocross GPU Probe 5.0-7.5-9.0 MHz</p> <p>More and more attention is given to ovari pick-up and embryo transfer. This probe gives an optimal combination of penetration power and image resolution due to it's multi and high frequency. The probe is very thin so excellent for young animals. The biopsy guide is incorporated in the probe. Scan angle: 120°</p> <p>Provet code : ULTR 23</p>		

<p><b>Small animals</b></p> <p><b>Dog</b> Gestational Sac Diameter Crown Rump Length (less than 40 days) Head Diameter Body Diameter (more than 40 days)</p> <p><b>Cat</b> Head Diameter Body Diameter (more than 40 days)</p> 	<p><b>Mix practice</b></p> <p><b>Small animals</b> <b>Large animals</b></p> 	<p><b>Large animals</b></p> <p><b>Equine</b> Sac Diameter Concepts Diameter</p> <p><b>Sheep</b> Trunk Diameter Head Diameter</p> <p><b>Cattle</b> Trunk Diameter Head Length Head Diameter Crown Rump Length</p> 
--	---	--

# INSTRUMENTS | EQUIPMENT

## DIAGNOSTIC IMAGING

### MINDRAY DP6600 Vet

#### Digital B&W Ultrasound Scanner

Mindray's portable veterinary ultrasonic imaging system offers high quality digital diagnostic imaging to wherever you want. Excellent imaging performance and reliable diagnosis make clinical examination much more effective.

#### THE DP- 6600 VET DIGITAL ULTRASONIC DIAGNOSTIC IMAGING SYSTEM FEATURES:

Compact and lightweight - Dimensions 286mm(W) x 385mm(L) x 306mm(H)  
Net weight 11kg



#### Innovative Technology

Powered by the XD engine, optimizes imaging precision via all digital technologies and ensures the reality and perfection of images. This machine has 16-frame image storage and images can be downloaded to PC via USB port.

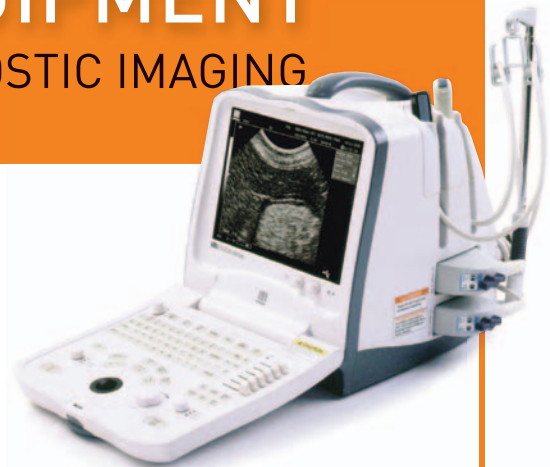


#### Incomparable Image Quality

Tissue speciality imaging allows the users to flexibly adjust the imaging parameters according to the type of tissue scanned, presenting higher definition images.

#### Extensive Applications

With a variety of multi-frequency transducers, and abundant measurement and calculation software packages specifically designed for dog, cat, equine, bovine and ovine.



**MINDRAY DP6600 Vet**  
( probes not included )  
Provet code : ULTR 50

#### Extraordinary Features

The DP – 6600Vet includes these standard features that are usually unique to higher end systems:

- Multi-frequency transducers
- 10MHz microanatomy imaging
  - 256 – frame cine loop
  - 16 – frame image storage
- Dual USB and DICOM3.0 ( optional )

#### Friendly and Easy to use

Creates a comfortable working environment with its elegant outline, fold up control panel and optional mobile trolley. The 10" non-interlaced display, backlit keyboard and dual transducer ports minimize working fatigue.

#### Measurement and Calculation

Distance ,Circumference, Area,Volume, Angle, Residual urine volume ,Histogram Distance, time, velocity, heart rate ( 2 cycles )  
Reproductive software for dog, cat, equine, bovine and ovine

#### Options

- Electronic endorectal transducer : 75L50EAV/L50 (5.0/7.5/10MHz)  
Provet code : ULTR 51
- Electronic endorectal transducer : 50L65EAV/L65 (4.0/5.0/6.0MHz)  
Provet code : ULTR 52
- Electronic linear array transducer : LA7.5MHz/L38 (5.0/7.5/10MHz)  
Provet code : ULTR 53
- Electronic micro-convex array transducer : CA3.5MHz (2.0/3.5/6.0MHz)  
Provet code : ULTR 54
- Needle guide brackets  
Provet code : ULTR 55
- Mobile trolley  
Provet code : ULTR 56

